



# NETA V

Touchable Smart EV



Products (specific configuration, details, etc.) are subject to the models displayed and sold in the auto store.



## Crossover & fastback design Smooth Powerful Elegant Agile

- Dolphin streamline with low wind resistance
- Hawk-eye laser headlights
- Suspended roof
- 4070mm length



- Sporty rear spoiler
- Laser engraved rear tail lights
- Laser high-mounted brake light

### User benefits:

Delicate and beautiful appearance, effective avoidance of rear-ending, and improved driving safety



- Hawk-eye laser headlights
- Hawk-eye laser LED daytime running lights

### User benefits:

Sharp and powerful, concentrated light, long irradiation distance



- Dolphin streamline with low wind resistance
- Fastback design
- Suspended roof
- Double waist line running through the front and back

### User benefits:

- ① The appearance is intelligent and smooth, pleasing to the eye;
- ② Low energy consumption and long endurance



- INS diaphragm Handcraft imported from Japan
- View - Technological geometry texture
- Touch - delicate quality

User benefits:  
Eco-friendly and exquisite, high-end luxury, delicate touch



- Support the overall reclining of the rear seats
- Expandable volume up to 552L
- 335L≈25 boxes of mineral water or 6 24-inch trolley cases

User benefits:  
Large trunk volume, worry-free travel



- Sport style leather seats
- Encircling wrapping design
- Breathable perforated seats
- Hand stitched

User benefits:  
Adopting a sports-style shape, the pressure distribution of the vehicle seat is developed against the standard of Mercedes-Benz, and matched with high-quality seat fabrics to create an ergonomic zero-gravity seat



## Hi-Tech Minimalist Interior

- 14.6" Telematics large screen
- 12" digital instrument screen
- INS diaphragm handcraft from Japan
- Ergonomic Zero Gravity Seat



## Light-sensing Automatic Headlights

- According to the light sensor to adjust the change of brightness, so as to control the automatic lighting or extinguishing of the headlights
- When the day grows dark, many drivers neglected to turn on the headlights, and often thought of turning on the headlights only when the vision was very poor, and this move has serious safety hazards

### User benefits:

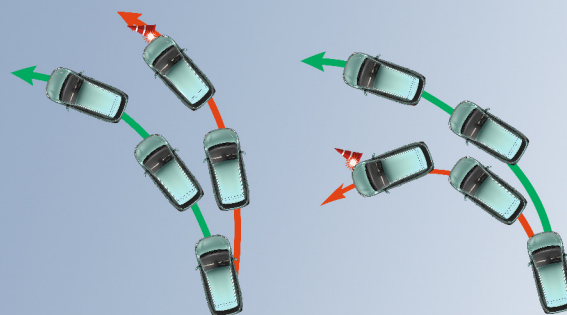
Delicate and beautiful appearance, effective avoidance of rear-ending, and improved driving safety

## ESC Electronic Stability Controller

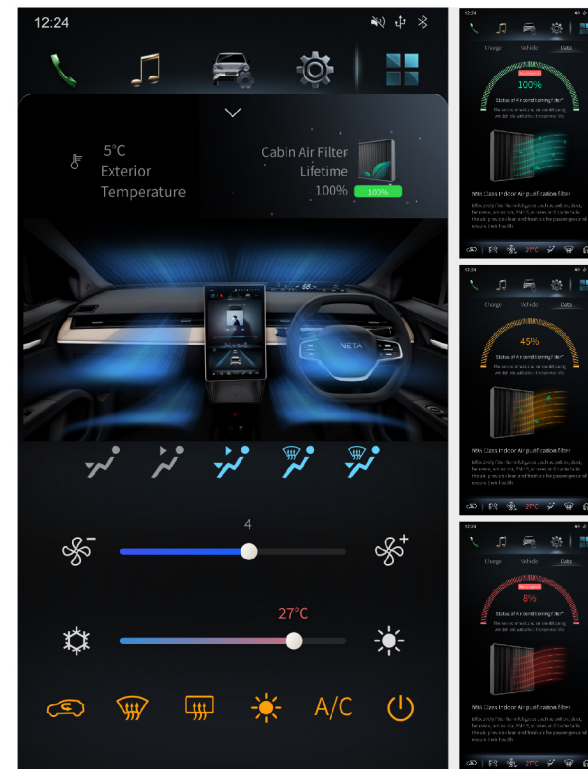
- Analyze the vehicle's driving state from various sensors, and then send correction commands to ABS, EBD, etc., to help the vehicle maintain dynamic balance
- It can maintain the best stability of the vehicle in various conditions, which is more obvious in the situation of oversteer or understeer

### User benefits:

Ensure the integrity of driver's intention, and improve the safety and control of the vehicle



ESC



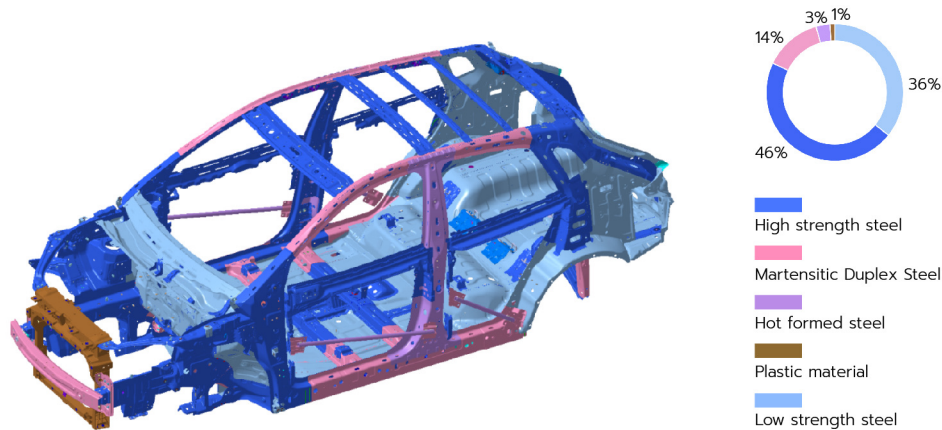
## HEPA N95 grade filter + air conditioner filter lifespan reminder

- The filtration efficiency of particles with a diameter greater than  $0.3 \mu\text{m}$  reaches 95.8%, effectively filtering small particles, pollen, dust, benzene, ammonia, viruses and bacteria in the air and other harmful gases
- Remind the filter status in time and provide "N95 level" protection standard

### User benefits:

Ensure the best air quality in the car at all times

## High-strength steel caged body



- The high-strength steel in the body accounts for 63%, among which, the front anti-collision steel beam and the lower sill, the A-pillar and the side roof beam are made of martensitic dual-phase steel, and the B-pillar as a whole is made of hot-formed steel exceeding 1500Mpa

### User benefits:

Maximize the safety of occupants when the vehicle collides or rolls over

## Endurance/Performance

### 380km endurance

- Charge once and commute for a week

### 0-50km/h acceleration in only 3.9s

- Whether it is starting to speed up, or overtaking in the middle, it can always make you relaxed and calm

### User benefits:

Speeding up at the start and overtaking in the middle are not a problem, and it is easy to cope with urban commuting



\*The maximum power of the motor is 70kW

# HEPT 3.0 Thermostatic Battery Management System

## High temperature cooling function

- Thermostatic liquid cooling system
- The maximum temperature is  $\leq 45^{\circ}\text{C}$ , to ensure that the battery is always in a suitable temperature range, improving charging efficiency and battery life
- Cooling temperature difference  $\leq 3^{\circ}\text{C}$  to ensure battery temperature consistency
- Cooling energy consumption  $< 5\%$

## Low temperature heating function

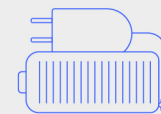
- Heating rate  $\geq 0.8^{\circ}\text{C}/\text{min}$ , quickly raise the battery temperature to a suitable range to ensure charging efficiency
- Heating temperature difference  $\leq 5^{\circ}\text{C}$  to ensure battery temperature consistency
- Heating energy consumption  $< 5\%$

## 95% constant temperature ratio

- 15-45 $^{\circ}\text{C}$  thermostat accounts for 95%

### User benefits:

Adopt the self-developed HEPT 3.0 thermostatic battery management system, with automatic high temperature cooling, low temperature heating functions. Keep the battery in the best working condition



HEPT 3.0 Thermostatic Battery Management System

## Zero buttons (ride and go without buttons)

- Same design language as Tesla Model 3

User benefits:

The "instant" sense of human-vehicle link in the ride-go and leave-lock experience, makes the simple design to the extreme and makes driving easier



Zero buttons

## 14.6-inch central control touchscreen

- Full touch capacitive screen
- 1920×1080 HD resolution



14.6-inch central  
control touchscreen

## Phone projection

- Project the mobile phone navigation, music, phone calls, etc. to the central control screen, through which the mobile phone can also be operated
- Support Android, Apple system

User benefits:

The addition of the mobile phone projection makes it easy to use the large screen in the vehicle to watch the navigation in the mobile phone, etc., which is clearer and more convenient



Phone projection



## V2L external discharge function

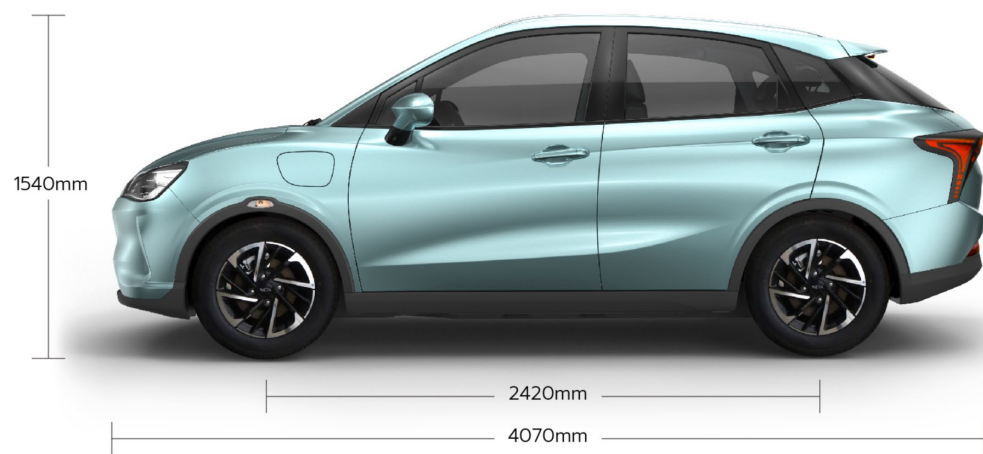
- As a power bank during outdoor activities
- Provide electricity for small electrical appliances
- The maximum external discharge power at 3.3kW

User benefits:

Enjoy spontaneous outdoor camping&barbecue with full electricity power



## Product Appearance Size



User benefits:  
4070mm extra-long vehicle length, bringing a leapfrog space experience

## Product Appearance Color



White Storm

Midnight Gray

Cyan



Sky Blue



Sakura Pink

## Product Interior Color

